

# Current Covid-19's Impact on Saudi Stock Market: Evidence from an ARDL Model

Chaouachi Maroua<sup>1</sup> and Chaouachi Slim<sup>2</sup>

<sup>1</sup>(PhD in Finance), Higher Institute of Management/University of Tunis/Tunisia, E-mail: marwa\_cb@yahoo.fr

<sup>2</sup>(Assistant professor in Economics), Higher Institute of Management/University of Tunis/Tunisia  
E-mail: chaouachislim@yahoo.fr

Received: 9 February 2021; Revised: 12 February 2021;

Accepted 26 February 2021; Publication: 5 June 2021

**Abstract:** This paper investigates the effect of COVID-19 pandemic on stock market in KSA applying an Autoregressive Distributed Lag (ARDL) cointegration approach. More especially, we analyze the relationship between the natural logarithm of trading volume of Tadawull All shares index (TASI) and the natural logarithm of daily COVID-19 confirmed cases both in the short-run and the long-run. The bounds test for cointegration is carried out for daily series over the period from March 02, 2020 till May 20, 2020. Toda-Yamamoto causality test is implemented between variables. Our findings indicate that there is a negative impact of COVID-19 on stock market only in the long-run. Causality test reveals a unidirectional causality from COVID-19 prevalence's measure to stock market. Robustness check seems to be conclusive.

**Keywords:** Stock Market, COVID-19, ARDL, Bounds test, KSA.

**JEL Classification:** I10, G15, C32, O53

## 1. Introduction

The world has tried to compact, since the beginning of the century, the widespread of many pandemics and epidemics-prone diseases including thesevere acute respiratory syndrome (SARS) in 2003, the 2009 H1N1 influenza pandemic, the 2012 Middle East respiratory syndrome (MERS), the 2014 epidemic of Ebola (Abdulazeez, 2020). For a long time, costs and repercussions of these diseases have been enormous to human health, to economies, and even to national security (Qiu and al. 2017). At the end of December 2019, a novel Coronavirus (COVID-19) disease appeared in Wuhan, China (Brüssow, 2020; Fauci, Lane & Redfield, 2020; Gentile & Abenavoli, 2020; Shang, Yang, Rao & Rao, 2020). On March 11, 2020, the World Health Organization (WHO) announced COVID-19 outbreak a global pandemic. Thus, it is an important wake-up call for all countries because it poses also a serious threat to public health and overall economy on both national and international level. According to Evans (2020), he confirms that COVID-19's economic effects are not merely considerable but positively harmful inasmuch as they caused permanent markets closure, long-term job losses amidst this pandemic, etc. Likewise, the current Coronavirus has wide-ranging and noteworthy shock waves on financial market that is made up of debt, commodity (crude oil and gold) and stock markets.

In this regard, this study illustrates with the impact of the COVID-19 on stock market in KSA. We attempt to examine how the natural logarithm of daily COVID-19 confirmed cases affects the natural logarithm of trading volume of Tadawull All shares index (TASI) in KSA by introducing an Autoregressive Distributed Lag (ARDL) cointegration technique in case of mixed level series  $I(0)$  or  $I(1)$ . This approach allows seeing if the linkage between the two variables tends to change in a direction that brings it closer to its long-run equilibrium.

The remainder of the paper proceeds as follows: The next section covers the literature review and hypotheses development. The section 3 focuses on methodology. Results are being discussed in the section 4 with robustness analysis. Finally, the section 5 draws the summary and conclusions of our research.

## **2. Literature review and hypotheses development**

This section provides a review of existing empirical evidence concerning the link between financial market and Coronavirus pandemic. This literature provides the basis for subheading 2.2 in which we develop hypotheses of our investigation.

### **2.1. Background**

Within the first line of study looking to the to the impact of Covid-19 on stock market, Qing He and al., (2020) use conventional t-tests and nonparametric Mann–Whitney tests to analyze the direct and spill-over effects of COVID-19 on daily stock markets returns in China, Italy, South Korea, France, Spain, Germany, Japan and the USA over the period June 01, 2019 till March 22, 2020. They find that COVID-19 has a negative but short-term effect on stock markets returns in these countries. Also, they note that the spill-over effects of COVID-19 on stock markets is bidirectional between Asian countries and European and American countries. However, they report that there is no evidence this pandemic exert negative on stock markets of these states more than it does the global average.

More recently, Al-Awadhi and al., (2020) investigate the effect of the COVID-19 pandemic on Chinese stock market. The analysis extends from 10<sup>th</sup> January, 2020 to 16<sup>th</sup> March, 2020, through the method of panel data. Daily stock returns represent the endogenous variable. Prevalence of COVID-19 was measured with (1) daily growth in total confirmed cases and (2) daily growth in total deaths caused by COVID-19. These two indicators are mixed with a number of control variables: (1) the natural logarithm of daily market capitalization and daily market-to-book ratio. Results of their estimation show that the decrease in both the daily growth in total confirmed cases and in total cases of death caused by COVID-19 involves the increase on stock returns across all companies. Also, they prove that control variables are negative and

significant. Authors perform several robustness analyses with firm fixed-effects and cluster robust estimators by firm and they find same results.

In the same spirit, Ben Ayed and al., (2020) employ the Swamy–Arora method for panel data analysis to examine the reaction of Tunisian stock market to current COVID-19 pandemic. Data starts from January 20 and ends at April 20, 2020 with an indicator of stock market presented by the stock returns performance of all companies listed on the Tunis Stock Exchange. The COVID-19 is measured by (1) the daily growth of confirmed cases (2) the daily growth of death tolls and (3) the daily growth of recovered cases. They conclude that daily growth of confirmed cases has a positive relationship with stock returns, while daily growth of deaths cases affect negatively the performance of stock returns. Conversely, daily growth of recovered cases has a positive impact but not significant. At the same time, they support that Tunisians authorities have an important role in wrestling the spillover of the pandemic by putting early preventive measures in order to protect population and save economy.

Using daily change in major stock index and daily growth in COVID-19 confirmed cases and mortalities data from 64 countries, on a daily basis from 22 January 2020 to 17 April 2020, a panel pooled ordinary least squares regression of Badar Nadeem Ashraf (2020) confirms that stock markets respond negatively to the increase in COVID-19 confirmed cases. He further documents a weak response of stock market to the growth in number of mortalities due to the COVID-19. Author adds a two-step further check. The first one with panel random-effects regression method and he obtains same results. The second step, he replaces country-level control variables and includes country fixed-effects dummy variables to verify if results are not driven by omitted variables in a cross-country setting. Results are the same as those obtained by the panel pooled ordinary least squares regression and confirm that are not biased. Overall, he concludes that the response of stock markets to COVID-19 pandemic is quick and its variation over time depends on the severity of outbreak.

Sansa (2020) evaluates the relationship between the COVID-19 confirmed cases and all the financial markets in USA and China (New York Dow Jones and Shanghai stock exchange). Their study covers the period from 1<sup>st</sup> March 2020 to 25<sup>th</sup> March 2020. According to results, he discovers that COVID-19 confirmed cases affect positively and significantly the financial markets in these countries. That means the COVID-19 had a significant impact on the financial markets during this period.

In a study carried out in the worst 6 countries (according to the daily number of cumulative cases of COVID-19, they represented 67.6% of worldwide cases as of 10<sup>th</sup> April, 2020) from 1<sup>st</sup> March 1, 2020 to 10<sup>th</sup> April, 2020, Alber (2020) investigates how the Coronavirus spread affected stock markets using numbers per million of population as a measure of Coronavirus spread, while  $\Delta$  in stock market index as a measure of stock market return. The author resorts to the GMM technique and documents a sensitivity of stock market to

Coronavirus cases more than mortalities, and to Coronavirus cumulative indicators more than new ones. Besides, robustness analysis using OLS regression provides evidence of a significant negative impact of Coronavirus spread on stock market return for China, Germany, France and Spain but not for American and Italian markets.

HaiYue Liu and al., (2020) document a short-term impact of the Coronavirus outbreak on 21 leading stock market indices in the most affected countries by virus including Japan, Korea, Singapore, USA, Germany, Italy, UK etc. In fact, they notice that COVID-19 confirmed cases reduce stock market indices daily abnormal returns after the outbreak by using OLS regression. This negative interaction is greater in Asian markets than others markets. Moreover, this study investigates investor's fear sentiment triggered by COVID-19 on stock markets. This sentiment proved to be a complete mediator and transmission channel for the COVID-19 outbreak's effect on stock markets. As robustness check, they use FGLS estimation with heteroscedastic residues terms including time dummies and confirm also this negative significance.

Additionally, Elsayed and al., (2020) examine the effects of COVID-19 spread on 17 sectors of stock exchange of Egypt over the period from March 1, 2020 till May 10, 2020. The dependent variable is measured by the returns of the daily sectoral indicators for the Egyptian stock market. COVID-19 measurements are constituted by cumulative cases, new cases, cumulative deaths, and new deaths. They find that stock market's returns of all sectors seem to be more sensitive to cumulative death indicators than daily mortalities caused by COVID-19, and new cases more than COVID-19's cumulative cases.

An extensive literature survey by Goodell (2020), emphasizing the economic effects of natural disasters, such as nuclear wars, climate change or localized disasters, proves that COVID-19 pandemic has caused more serious financial distractions (including stock markets, banking and insurance) than those are caused by previous disasters. Likewise, Zhang *et al.*, (2020) prove that COVID-19 increases financial markets risks.

Recent analysis conducted by El-Basuony (2020) reveals that there is a negative significant relationship between the confirmed cases and death cases from COVID-19 and the volume trading on stock exchange in KSA and Egypt over the period April 01, 2020 till May 21, 2020. Applying an OLS regression, empirical results show that COVID-19 has a significant impact on the financial markets in these two countries.

Gormsen and Kojen (2020) tries to quantify how American and European investors' expectations about economic growth across horizons evolve in response to the Coronavirus outbreak and subsequent policy responses by using data from the aggregate equity market and dividend futures.

Summarizing, the existing literature regarding the link between financial market and COVID-19 is quite limited. Thus, the current study contributes to the literature in 3 important ways:

- a) It contributes to the recently emerging evidence investigating the effect of more recent pandemic COVID-19 on Arab financial markets, which remains also limited.
- b) This study examines Arab stock market in KSA in the period from 2<sup>nd</sup> March 2020 to 21<sup>th</sup> May 2020. Our study is made upon detection of the first case of COVID-19 in Saudi Arabia.
- c) As far as we know, this is the first research looking to both the long-run dynamics and the short-run relationship between stock market in KSA and COVID-19 spillover using ARDL specification.
- d) It contributes to the existing literature on financial market and COVID-19 by providing additional insights into the direction of the causality by using the Toda-Yamamoto causality test.

## 2.2. Hypotheses development

The antecedent subsection discussed current literature with regard to effects of COVID-19 on financial markets. It forms the basis for the hypotheses of my paper:

H<sub>1</sub>: "There exists a significant relationship between COVID-19 and Saudi stock market in the short-run."

H<sub>2</sub>: "There exists a significant relationship between COVID-19 and Saudi stock market in the long-run."

## 3. Methodology

In order to study the impact of COVID-19 on the KSA stock market, we estimate an Autoregressive Distributed Lag (ARDL) model. This technique developed by Pesaran and Shin (1999) and Pearsan and al., (2001) is an alternative to test cointegration of Engel and Granger (1987) and Johansen (1988, 1991). It allows, on the one hand, to test the long term-run using a set of variables which are not integrated of the same order I (0) or (1) (Senay and Merter, 2010). On the second hand, by applying the ARDL approach we get unbiased estimates of the long-run relationship (Harris and Sollis, 2003) and finally it is better suited to small samples (Narayan, 2005). The optimum number of lags of the dependent variable and the interest variable is selected based on the Akaike Information Criteria (AIC). We also try to test the existence of a *causal* relation between these two variables.

### 3.1. Research model

The answers to the hypotheses below are estimated by the ARDL approach. Thus, our ARDL model is given by the following equation:

$$\Delta \text{LOG\_TASI}_{(t)} = C + \sum_{i=1}^p \alpha_{1i} \Delta \text{LOG\_TASI}_{(t-i)} + \sum_{i=0}^q \alpha_{2i} \Delta \text{LOGCOVID\_19}_{(t-i)} + \beta_1 \text{LOG\_TASI}_{(t-1)} + \beta_2 \text{LOGCOVID\_19}_{(t-1)} + \varepsilon_{(t)} \quad (1)$$

In eq.(1), TASI is the trading volume of Tadawull All shares index; COVID-19 is the daily number of confirmed cases COVID-19; C is the constant; LOG(.) is the natural logarithm operator;  $\Delta$  is the first difference operator;  $\alpha_1$  and  $\alpha_2$  are the short-run coefficients;  $\beta_1$  and  $\beta_2$  are the long-run dynamics;  $\varepsilon_{(t)}$  is the error term.

To study the existence of long-run dynamics between variables, we calculate the “Bounds test to cointegration” based on Fisher statistic on hypothesis:

$H_0 : \beta_1 = \beta_2 = 0$ . The reject of  $H_0$  implies the presence of cointegration.  $H_0$  is rejected when the F- statistic exceeds the upper bounds value  $I(1)$ , while it is accepted if the F-statistic is lower than the lower critical bounds value  $I(0)$ . If not, we can't conclude.

In presence of cointegration, the long-run relationships obtained by cancellation of variables in the first difference (Morley, 2006 and Antoniou and al., 2013). On the basis of eq.(1), we deduce that it is represented by the following equation:

$$\text{LOG\_TASI}_{(t)} = -\left(\frac{C}{\beta_1}\right) - \left(\frac{\beta_2}{\beta_1}\right) \text{LOGCOVID\_19}_{(t)} \quad (2)$$

An Error Correction Model (ECM) for eq.2 can help to confirm the existence or not of cointegration between variables as following:

$$\Delta \text{LOG\_TASI}_{(t)} = \sum_{i=1}^p \alpha_{1i} \Delta \text{LOG\_TASI}_{(t-i)} + \sum_{i=0}^q \alpha_{2i} \Delta \text{LOGCOVID\_19}_{(t-i)} + \beta_1 \text{ECM}_{(t-1)} + \varepsilon_t \quad (3)$$

$$\text{ECM}_{(t)} = \text{LOG\_TASI}_{(t)} - \left[ -\left(\frac{C}{\beta_1}\right) - \left(\frac{\beta_2}{\beta_1}\right) \text{LOGCOVID\_19}_{(t)} \right] \quad (4)$$

### 3.2. Data and description

Trading volume of Tadawull All shares index (TASI) daily data are downloaded from the *www.investing.com* website. Additionally, the daily number of confirmed cases of the COVID-19 is collected from the official website of Ministry of Health of KSA. Our sample covers the period started from 02 March 2020 to 20 May 2020. The starting day 02<sup>nd</sup> March, 2020 has been chosen because as of this date the Saudi Arabia was detected the COVID-19's first case. Note that variables are transformed into the natural logarithm.

## 4. Results and discussions

In this section, we provide the empirical results and discussions. Subsection 4.1 presents the descriptive statistics of our variables. Subsection 4.2 continues with results of ARDL analysis of the key variable LOGCOVID\_19 on the dependent variable LOG\_TASI, concluded with some supplementary robustness check.

### 4.1. Descriptive statistics

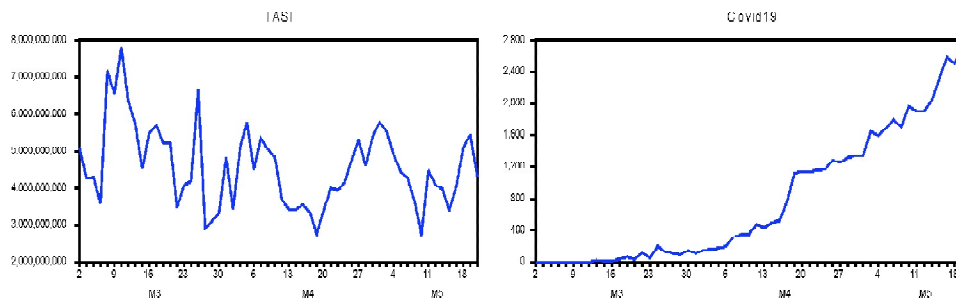
Table 1 presents the descriptive statistics of all retained series. TASI denotes the trading volume of Stock market in KSA (TASI). COVID-19 denotes the daily confirmed cases of COVID-19 in KSA.

**Table 1:** Summary statistics of main variables (2<sup>nd</sup> March 2020 to 20<sup>th</sup> May 2020)

Statistics	TASI	COVID-19
Mean	1.45e+10	1320.849
Median	4.84e+09	1147
Maximum	2.74e+09	4919
Minimum	2.74e+09	0
Std.div	6.01e+10	1351.407
Skewness	6.379362	.9420209
Kurtosis	43.6263	.9420209
Observations	73	73

Note: Outputs of data processing using STATA 12

Figure (1) highlights the movements of the trading volume of Tadawull All shares index (TASI) and COVID-19 daily confirmed cases starting with the first part of March.



**Figure 1:** Movements of TASI and Covid\_19 confirmed cases from 02/03/2020 to 20/05/2020

### 4.2. Quantitative results and discussions

#### 4.2.1. Unit Root tests

Before proceeding to the ARDL approach, we test the stationarity of all series. Results of Augmented Dickey-Fuller (ADF, 1979) and Philips-Perron (PP, 1988) unit root tests, reported in Tables 2 and 3 indicate that all series are mixed either I (0) or I (1) and none of them is integrated of order 2 (I (2)). Hence the use of ARDL model is possible. LOG\_TASI is stationary where as LOGCOVID\_19 presents a unit root.

**Table 2:** ADF Unit Root test on log level of variables

Variables		<i>t</i> -statistic	Test critical values		Integration order
LOG_TASI	Level	-4.1608(b)**	1%	-3.5504	I(0)
		(0.0017)	5%	-2.9135	
			10%	-2.5945	
	First difference	-10.6211(c)***	1%	-2.6069	I(0)
		(0.0000)	5%	-1.9467	
			10%	-1.6131	
LOGCOVID_19	Level	-2.6785(b)*	1%	-3.5575	I(1)
		(0.0844)	5%	-2.9166	
			10%	-2.5961	
	First difference	-14.1560(a)***	1%	-4.1373	I(0)
		(0.0000)	5%	-3.4953	
			10%	-3.1766	

Note: \*\*\*, \*\*, \* indicate the significance at the level 1%, 5% et 10%. LOG\_TASI is natural logarithm of the value of the trading volume of Tadawull All shares index, LOGCOVID\_19 is the natural logarithm of the daily confirmed cases. We select 3 models: (a) model with intercept and trend (b) model without trend (c) model without intercept and trend. Optimal number of lags is based on AIC.

**Table 3:** PP Unit Root test on log level of variables

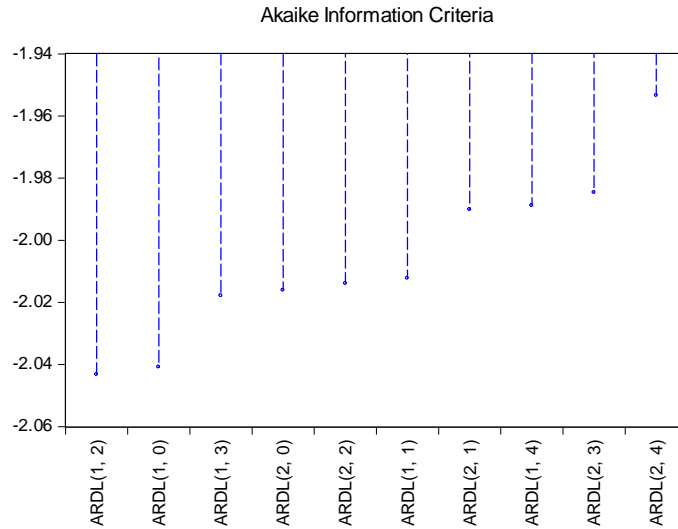
Variables		Adj. <i>t</i> -stat	Test critical values		Integration order
LOG_TASI	Level	-4.0818(b)**	1%	-3.5504	I(0)
		(0.0022)	5%	-2.9135	
			10%	-2.5945	
	First difference	-19.2384(c)***	1%	-2.6069	I(0)
		(0.0000)	5%	-1.9467	
			10%	-1.6131	
LOGCOVID_19	Level	-3.4025(b)**	1%	-3.5550	I(1)
		(0.0150)	5%	-2.9155	
			10%	-2.5956	
	First difference	-18.7694(a)***	1%	-4.1373	I(0)
		(0.0000)	5%	-3.4953	
			10%	-3.1766	

Note: \*\*\*, \*\*, \* indicate the significance at the level 1%, 5% et 10%. LOG\_TASI is natural logarithm of the value of the trading volume of Tadawull All shares index, LOGCOVID\_19 is the natural logarithm of the daily confirmed cases. We select 3 models: (a) model with intercept and trend (b) model without trend (c) model without intercept and trend. Test critical values are those of Mackinnon (1996).

#### 4.2.2. ARDL estimation

In order to select the optimal number of lag (p,q) to the ARDL model, we used the Akaike Information Criterion (AIC). The ARDL (1,2) present the most optimal among 10.





**Figure 2:** Akaike information criteria

Table 4 shows that the major of coefficients of the ARDL model (1,2) are significant (Prob <5%). Likewise, the model is globally significant, Prob (F-statistic) = 0.000016). It should be noted that the model is estimated with the “constant” option, which is very significant (Prob < 1%).

**Table 4:** ARDL (1, 2) estimation

Variable	Coefficient	Std. Error	t-Statistic	Prob.*
LOG_TASI(-1)	0.443533	0.120804	3.671522	0.0006
LOGCOVID_19	0.011742	0.057716	0.203446	0.8396
LOGCOVID_19(-1)	0.077992	0.050849	1.533783	0.1315
LOGCOVID_19(-2)	-0.119295	0.054456	-2.190658	0.0333
C	5.435542	1.184644	4.588335	0.0000
F-statistic	8.975826	R-squared	0.422873	
Prob(F-statistic)	0.000016			

Despite the fact that the major of coefficients are significant and the model is also globally significant, however, it is important to check whether it is indeed valid. So we need to conduct validity tests, including autocorrelation tests of residues.

Results of the Ljung-Box test indicate that the probability of the Q statistic is clearly greater than the 5% and even 10% threshold. Results strongly suggest the absence of autocorrelation in the model errors, which is essential to continue our estimation. Because if there is an autocorrelation of residues, parameters estimated will not be consistent, due to the presence of lagged dependent variable that appears as exogenous variable in the model.

**Table 5:** Autocorrelation of residuals

<i>Autocorrelation</i>	<i>Partial Correlation</i>		<i>AC</i>	<i>PAC</i>	<i>Q-Stat</i>	<i>Prob*</i>
.   .	.   .	1	0.050	0.050	0.1451	0.703
*   .	*   .	2	-0.176	-0.179	1.9504	0.377
*   .	*   .	3	-0.084	-0.067	2.3713	0.499
.   *	.   *	4	0.120	0.101	3.2495	0.517
.   .	.   .	5	0.035	-0.003	3.3257	0.650
.   .	.   .	6	-0.021	0.008	3.3534	0.763
*   .	*   .	7	-0.146	-0.130	4.7291	0.693
.   .	.   .	8	-0.005	-0.002	4.7305	0.786

\* Probabilities may not be valid for this equation specification.

**Table 6:** Bound test to cointegration results

<i>Model Specification</i>	<i>F-statistic</i>	<i>k</i>	<i>Critical value Bounds</i>				<i>Conclusion</i>
			<i>Lower bound</i>		<i>Upper bound</i>		
			<i>I(0)</i>		<i>I(1)</i>		
ARDL(1, 2)	10.62920***	1	1%	6.84	1%	7.84	Cointegration
			5%	4.94	5%	5.73	
			10%	4.04	10%	4.78	

Note: \*\*\*indicate the significance at the level 1%.

Bound test results confirmed the existence of cointegration relationship between series (F-stat = 10.62920 > upper bound I (1)), which gives the possibility of estimating the long-run relationship between LOGCOVID\_19 and LOG\_TASI.

**Table 7:** Dynamics of the short-run and long-run

<i>Variable</i>	<i>Cointegrating Form</i>			
	<i>Coefficient</i>	<i>Std. Error</i>	<i>t-Statistic</i>	<i>Prob.</i>
$\Delta$ (LOGCOVID_19)	0.011742	0.057716	0.203446	0.8396
$\Delta$ (LOGCOVID_19(-1))	0.119295	0.054456	2.190658	0.0333
ECM(-1)	-0.556467	0.120804	-4.606380	0.0000
ECM(-1) = LOG_TASI - (-0.0531*LOGCOVID_19 + 9.7679)				
<i>Variable</i>	<i>Long-Run Coefficients</i>			
	<i>Coefficient</i>	<i>Std. Error</i>	<i>t-Statistic</i>	<i>Prob.</i>
LOGCOVID_19	-0.053123	0.025200	-2.108084	0.0402
C	9.767948	0.069033	141.496331	0.0000

The long-run relationship is the following: LOG\_TASI=9.7678\*\*\*-0.0531\* LOGCOVID\_19. Results show that there is a negative significant long-term relationship between COVID\_19 and stock market in KSA: an increase of the daily number of COVID-19 confirmed cases of 100% led to a decrease of 5% of trading volume of Tadawull All shares index (TASI). The term ECM (-1) corresponds to the lagged error from the long-term equilibrium equation. This

coefficient expresses the degree to which the variable LOG\_TASI will be recalled towards the long-term target. It is negative (-0.5565) and largely significant (Prob=0.0000<1%), thus reflecting a relatively quick long-term target adjustment.

However, in the short-run relationship, it appears that there is no significance between all variables, but LOGCOVID\_19 delayed by one day (t-1) has a positive and significant impact on LOG\_TASI in day (t) at level 5%. Despite of the coronavirus pandemic, investors can implement some strategies increasing the number of transactions on the market: they can either buy stocks that have preserved gains despite the crisis and which should still perform well during and after COVID-19 (conservative approach) or/ and sell short-term stocks in difficulty that could still suffer from the pandemic if they think that it will continue.

As we already know, correlation does not mean causality. To test the causality that can exist between variables, we are used the Toda Yamamoto causality test. As expected, a causality relationship ranging from LOGCOVID\_19 to LOG\_TASI is confirmed by Toda-Yamamoto causality test (Prob = 0.0043, the null hypothesis is rejected). However, there is no causality from LOG\_TASI to LOGCOVID\_19 (Pob=0.4413).

**Table 8:** Toda-Yamamoto causality test

<i>Dependant variable: LOG_TASI</i>	<i>Chi-sq</i>	<i>df</i>	<i>Prob.</i>	<i>Causality</i>
LOGCOVID_19	10.88628	2	0.0043	LOGCOVID_19 ⇒ LOG_TASI
<i>Dependant variable: LOGCOVID-19</i>	<i>Chi-sq</i>	<i>df</i>	<i>Prob.</i>	<i>Causality</i>
LOG_TASI	1.636264	2	0.4413	LOG_TASI ⇒ LOGCOVID_19

#### 4.2.3. Robustness check

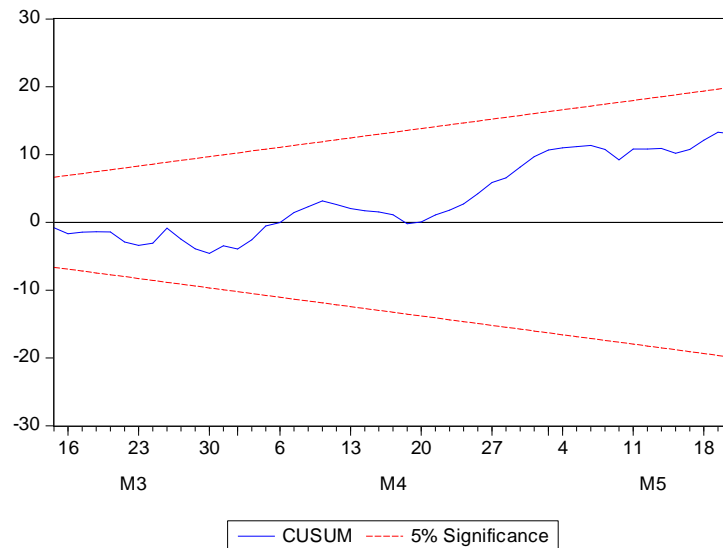
We use some diagnostic tests of residuals for robustness analysis. It is about the test of Breusch-Godfrey serial correlation LM autocorrelation Test of errors, the heteroskedasticity Test of Breusch-Pagan-Godfrey, Jarque Bera test for the Normality of residues and the stability test of CUSUM. All results confirm that there is no autocorrelation (Prob=0.1715>5%), no heteroskedasticity (Prob=0.939) and errors are normally distributed (Prob=0.4639).

**Table 9:** Diagnostic tests results

<i>Test's hypothesis</i>	<i>Tests</i>	<i>Values</i>
Autocorrelation	Breusch-Godfrey serial correlation LM	1.831212 (0.1715)
Heteroskedasticity	Breusch-Pagan-Godfrey	0.19 (0.9390)
Normality	Jarque Bera	2.525339 (0.4639)

Note: \*\*\*, \*\*, \* indicate the significance at level 10%, 5% and 1%.

Figure 3 illustrates the CUSUM test results and shows that all the parameters of the model are stable over time, because recursive errors remain, at the whole period, inside the confidence interval at level of 5%.



**Figure 3:** CUSUM stability test

## 5. Summary and Conclusions

The study focuses on modeling the effects of the Coronavirus spillover on stock market in KSA during the period from 2<sup>nd</sup> March, 2020 to 20<sup>th</sup> May, 2020 using an ARDL estimation approach. The natural logarithm of the trading volume of the KSA Stock Exchange (TASI) is the endogenous variable while LOGCOVID\_19 daily confirmed case is the Corona prevalence's measure. Previous researches about effects of the COVID-19 epidemic on Arabic Stock Market remain limited, while this study is a contribution to this recently emerging literature. Moreover, it not only analyses the short-run relationship between Coronavirus and Saudi Stock Market, but also, the long-run and causality. Findings indicate (1) the presence of long-run negative relationship between LOG\_TASI and LOGCOVID\_19 (2) the causality between variables is unidirectional from LOGCOVID\_19 to LOG\_TASI. Robustness analysis confirms our results. Therefore, a powerful national response is needed, including tough measures to prevent a serious stock market crash in KSA in long-run.

## References

- Abdulazeez, A.A. (2020). The coronavirus disease 2019 (COVID-19) pandemic: A review and an update on cases in Africa, *Asian Pacific Journal of Tropical Medicine*, 13(5):199-203.

- Al Awadhi, A. M., Al-Saifi, K., Al-Awadhi, A., & Alhamadi, S. (2020). Death and contagious infectious diseases: Impact of the COVID-19 virus on stock market returns, *Journal of Behavioral and Experimental Finance*, 100326.
- Alber, N. (2020). The Effect of Coronavirus Spread on Stock Markets: The Case of the Worst 6 Countries. Available at SSRN 3578080.
- Antonis, A., Katrakilidis, C., & Tsaliki, P. (2013). Wagner's Law versus Keynesian Hypothesis: Evidence from pre-WWII Greece, *Panoeconomicus*, 60(4): 457-472.
- Badar Nadeem, A. (2020). Stock market reaction to COVID-19: Cases or fatalities, *Reasecrh of International Business and Finance*, 54,101249.
- Ben Ayed, W., Medini, F., & Lamouchi Ammar, R. (2020). Stock Market under the Global Pandemic of COVID-19: Evidence from Tunisia. Available at SSRN: <https://ssrn.com/abstract=3598726> or <http://dx.doi.org/10.2139/ssrn.3598726>.
- Brüssow, H. (2020). The Novel Coronavirus—A Snapshot of Current Knowledge, *Microbial Biotechnology*. <https://doi.org/10.1111/1751-7915.13557>.
- El-Basoun, H. 2020. Effect of COVID-19 on the Arab Financial Markets Evidence from Egypt and KSA, *IOSR Journal of Business and Management*, 22(6): 14-21.
- Elsayed, A. & Elrhim, M. A. (2020). The Effect Of COVID-19 Spread On Egyptian Stock Market Sectors. Available at SSRN: <https://ssrn.com/abstract=3608734> or <http://dx.doi.org/10.2139/ssrn.3608734>.
- Engle, Robert F., & Clive W. J. Granger. (1987). Co-Integration and Error Correction: Representation, Estimation, and Testing, *Econometrica*, 55(2): 251-276.
- Evans, O. (2020). Socio-economic impacts of novel coronavirus: The policy solutions, *BizEcons Quarterly*, 7, 312.
- Fauci, A. S., Lane, H. C., & Redfield, R. R. (2020). Covid-19—Navigating the Uncharted. *The New England Journal of Medicine*, 10,1056/NEJMe2002387.
- Gentile, I., & Abenavoli, L. (2020). COVID-19: Perspectives on the Potential Novel Global Threat, *Reviews on Recent Clinical Trials*, 15(2), 1.
- Goodell, J. W. 2020. COVID-19 and finance: Agendas for future research, *Finance Research Letters*. Available at: <https://doi.org/10.1016/j.frl.2020.101512>.
- Gormsen, N. J., & Kojien, R. S. J. (2020). Coronavirus: Impact on Stock Prices and Growth Expectations, Working Paper, University of Chicago Booth School of Business.
- HaiYue, L., Aqsa, M., CangYu, W., Lei Z., & Zaira, M. (2020). The Covid-19 outbreak and Affected Countries Stock Markets response, *International Journal of Environmental Research and Public Health*, 17, 2800.
- Harris, R. I. D., & Sollis, R. (2003). Applied time series modelling and forecasting, Chichester, West Sussex, England, J. Wiley.
- Johansen, S., & Katarina, J. (1990). Maximum Likelihood Estimation and Inference on Cointegration - With Applications to Demand for Money, *Oxford Bulletin of Economics and Statistics*, 52(2): 169-210.
- Morley, B. (2006). Causality between Economic Growth and Immigration: An ARDL Bounds Testing Approach, *Economics Letters*, 90(1): 72-76.
- Narayan P, K. (2005). The Saving and Investment Nexus for China: Evidence From Cointegration Tests, *Applied Economics*, 37(17): 1979-19.

- Pesaran, M., H., & Yongcheol, S. (1999). An Autoregressive Distributed Lag Modeling Approach to Cointegration Analysis, In *Econometrics and Economic Theory in the 20th Century: The Ragnar Frisch Centennial Symposium*, ed. Steinar Strøm, 371-413, Cambridge: Cambridge University Press.
- Pesaran, M.H., Yongcheol Shin, & Richard J. S. (2001). Bounds Testing Approaches to the Analysis of Level Relationships, *Journal of Applied Econometrics*, 16(3): 289-326.
- Qing, H., Junyi, L., Sizhu W., & Jishuang, Y. (2020). The impact of Covid-19 on stock markets, *Economic and political studies*.
- Qiu. W. R., Mao. A. S., & Chu, C. (2017). The Pandemic and its Impacts, *Health, Culture and Society*, 9(10). 3-11.
- Sansa, N. A. (2020). The Impact of the COVID-19 on the Financial Markets: Evidence from China and USA, *Electronic Research Journal of Social Sciences and Humanities*, 2.
- Senay. A., & Merter, M. (2020). The Endogeneity of the Natural Rate of Growth: An Application to Turkey, *Panoeconomicus*, 57(4): 447-469.
- Shang, W., Yang, Y., Rao, Y., & Rao, X. (2020). The outbreak of SARS-CoV-2 pneumonia calls for viral vaccines, *npj Vaccines*, 5(1), 1-3.
- Zhang, D., Hu, M., & Ji, Q. (2020). Financial markets under the global pandemic of COVID-19, *Finance Research Letters*, 101528.